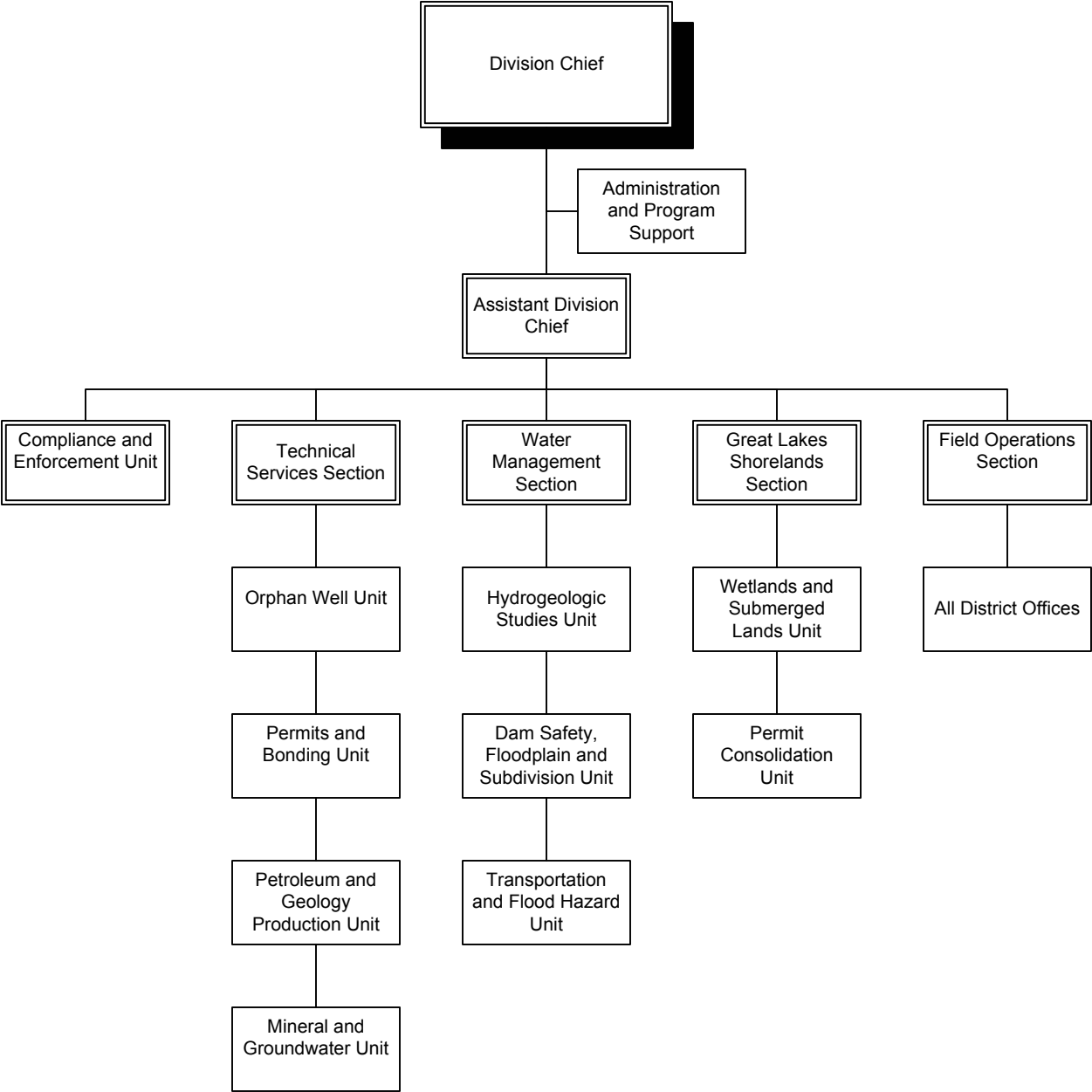
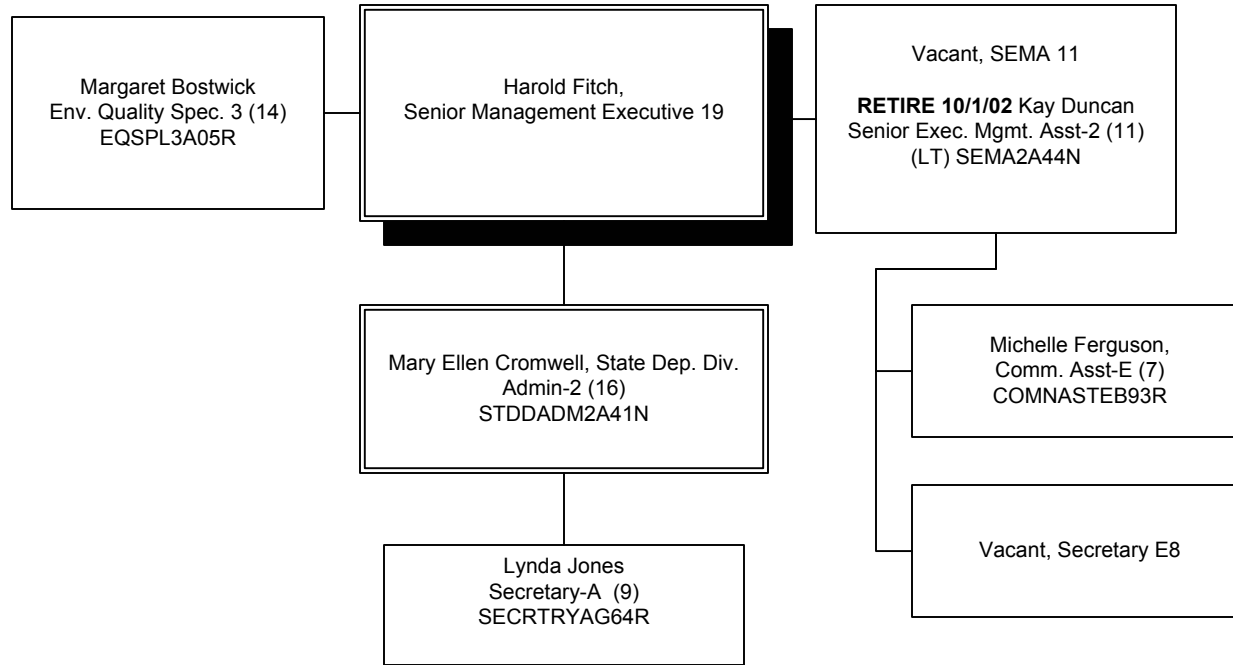


GEOLOGICAL AND LAND MANAGEMENT DIVISION



GEOLOGICAL AND LAND MANAGEMENT
EXECUTIVE

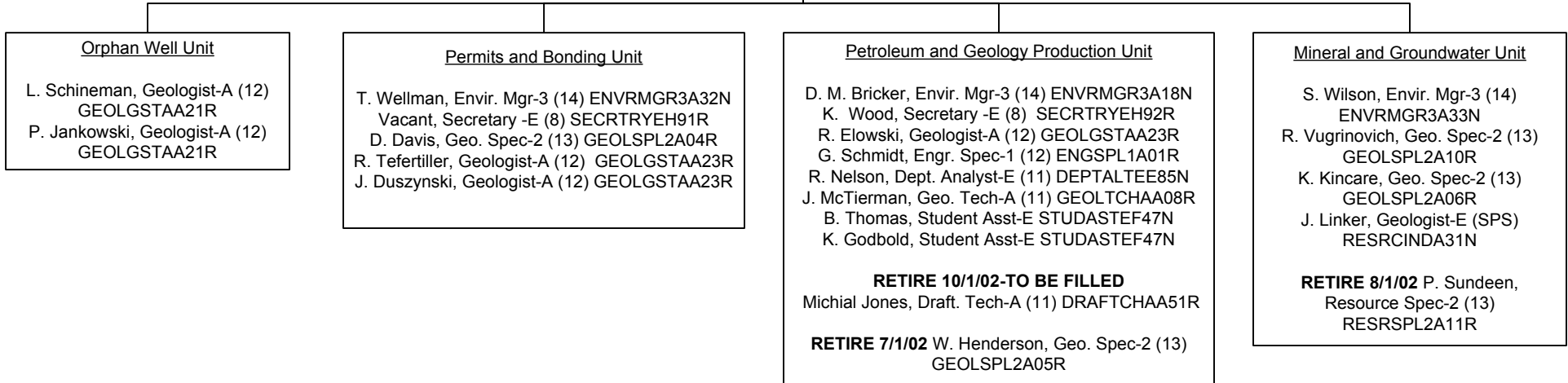


GEOLOGICAL AND LAND MANAGEMENT TECHNICAL SERVICES SECTION

Thomas Godbold, Envir. Mgr-4 (15)
ENVRMGR4A09N

Rebecca Browning/Rosanne Meyer
Secretary-A (9) SECRTRYAG62R

Susan Maul, EQS-2 (13)
EQSPL2A26R



GEOLOGICAL AND LAND MANAGEMENT
ADMINISTRATION AND PROGRAM SUPPORT

Larry Hartwig, Department Manager 15

RETIRE 11/1/02

Susan Thwaites, Dept. Mgr.-4 (15) DEPTMGR4B05N

Pamela Studebaker, Secretary-A (9) SECRTYAG61R

Cindy Emmons, Dept. Analyst-A (12) DEPTALTAD26N

Lois Marinangeli, Acct. Tech-E (8) ACCTTCHEB01R

RETIRE 11/1/02 Rodger Whitener, Envir. Mgr-4 (15)

ENVRMGR4A33N

Budget

Karen Jackson, Financial Mgr.-2 (13) FINAMGR2A10N

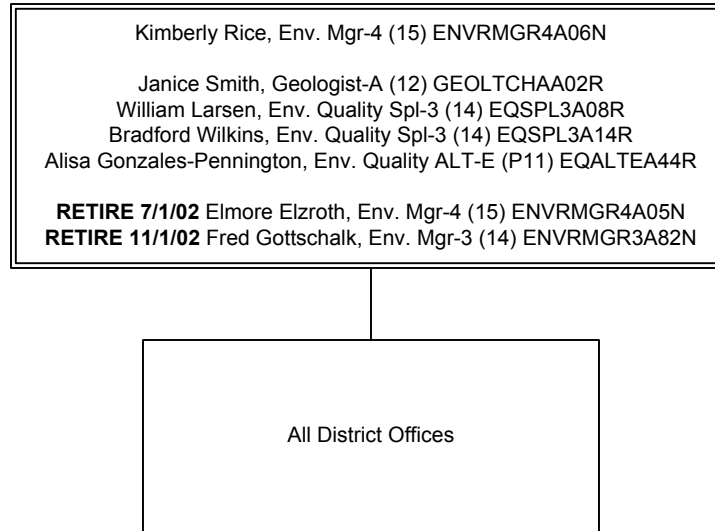
Lisa Farhat Rose, Gen. Ofc. Asst-A (8) GNOFASTAB02R

Sharon Carter, Gen. Ofc. Asst-E (7) GNOFASTEF47R

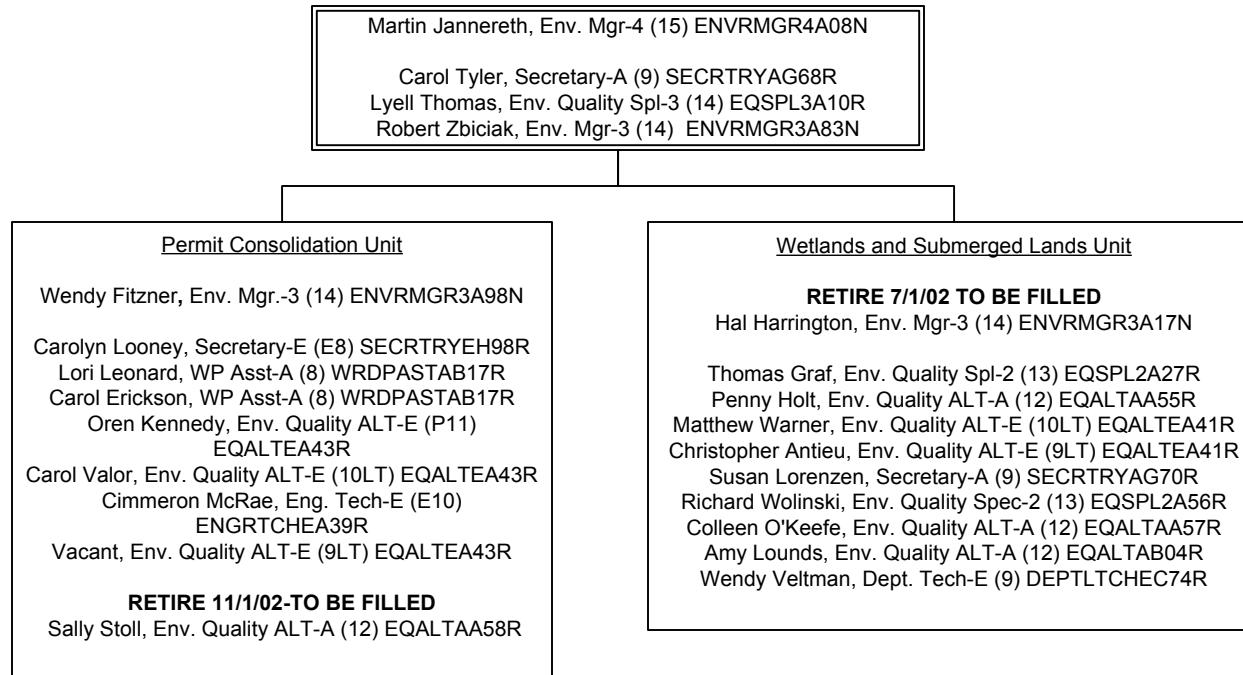
Kelly Graves, Student Asst-E STUDASTEF45N

Beth Carlson, Accounting Asst-E (7) ACCTASTEB80R

GEOLOGICAL AND LAND MANAGEMENT
FIELD OPERATIONS SECTION



GEOLOGICAL AND LAND MANAGEMENT
GREAT LAKES SHORELANDS SECTION



**GEOLOGICAL AND LAND MANAGEMENT
WATER MANAGEMENT SECTION**

RETIRE 11/1/02-TO BE FILLED
Hope Croskey, Eng. Mgr. Licensed-4 (15) ENGLMGR4A32N
(David Hamilton - Effective 10/1/02)
RETIRE 11/1/02-TO BE FILLED
Cheryl Gates, Secretary-A (9) SECRTYAG65R
RETIRE 11/1/02-TO BE FILLED
George Hosek, Env. Quality Spl-3 (14) EQSPL3A06R

Hydrogeologic Studies Unit

Richard Sorrell, Eng. Mgr. Licensed-3 (14) ENGLMGR3B33N
Bruce Menerey, Env. Eng. Lic. Spec-2 (13) EVILSPL2A04R
Marlio Lesmez, Eng. Eng. Licensed-A (12) EVILICAA10R
Arthur Armour, Env. Engineer-E (P11) EVIRENGEA24R
David Fongers, Env. Engineer-E (P11) EVIRENGEA24R
Sherry Spalding, Eng. Tech-E (E10) ENGRTCHEA38R
Vacant, Env. Engineer-A (9-E11) EVIRENGA

RETIRE 9/1/02 Jon Grace, Env. Engineer-A (12) EVIRENGAA37R

RETIRE 7/1/02-TO BE FILLED

Bonita Weber, Secretary-A (9) SECRTYAG66R

Dam Safety, Floodplain and Subdivision Unit

Byron Lane, Eng. Mgr. Licensed-3 (14) ENGLMGR3B17N
James Hayes, Env. Eng. Licensed-A (12) EVILICAA11R
Paul Wessel, Env. Eng. Licensed-A (12) EVILICAA11R
Roger Clark, Eng. Tech-SS (12) ENGTCHEA16R

Transportation and Flood Hazard Unit

Gerald Fulcher, Env. Engineer Lic-3 (14) ENGLMGR3B23N
Shirley Smith, Secretary-A (9) SECRTYAG67R
Christopher Potvin, Env. Engineer Lic-A (12) EVILCAA12R
Minmin Shu, Env. Engineer-A (12) EVILCAA20R
Alexander Sanchez, Eng. Tech-SS (12) ENGTCHEA17R
Holly Vickers, Eng. Tech-SS (12) ENGTCHEA17R

RETIRE 11/1/02 Richard Popp, Civil Tech Supv-1 (12)
CIVTSPV1A38N

GEOLOGICAL AND LAND MANAGEMENT
COMPLIANCE AND ENFORCEMENT UNIT

Peg McComb-Elowski, Env. Manager-3 (14) ENVRMGR3A51N

S Caldwell, Secretary-E8 SECRTYEJ90R (LT)

Kate Thompson, Env. Quality Analyst-A (12) EQALTAA54R

Leslie Smith III, Env. Quality Analyst-A (12) EQALTAA54R

Vacant, Student Assit-E (A) STUDASTE

RETIRE 7/1/02 D. Devi Tummala,

Env. Quality Analyst-A (12) EQALTAA54R

GEOLOGICAL AND LAND MANAGEMENT
DISTRICT OFFICES

Cadillac District Office

Vacant, Env. Mgr-3 (14) ENVRMGR3A19N

From LWMD

Elizabeth Morton, Secretary-A (9) SECRTYAG72R
Jeffrey Silagy, Env. Quality ALT-A (12) EQALTA62R
Barry Peterman, Env. Quality ALT-E (P11) EQALTEA48R
Susan Rundhaug, Env. Eng-E (P11) EVIRENGEA50R
Eric Hudy, Env. Quality ALT-E (P11) EQALTEA48R

RETIRE 11/1/02 Steven Spencer,
Env. Mgr-3 (14) ENVRMGR3A34N

From GSD

Diane Doubrava, Secretary-E (8) SECRTYEH93R
Mark Smith, Geologist-A (12) GEOLGSTAA24R
Michael Moss, Geologist-A (12) GEOLGSTAA26R
Jeffery Dexter, Geologist-A (12) GEOLGSTAA26R
Bill Lee, Geologist-A (12) GEOLGSTAA26R
Melvin Kiogima, Geo Tech-A (11) GEOLTCHAA03R
Edward Kirkby, Geologist-E (11) GEOLSTEA09R

RETIRE 10/1/02-TO BE FILLED
Derek Stadler, Geologist-A (12) GEOLGSTAA26R

Gaylord Field Office

From LWMD

Vacant - Environmental Manager 13

Sandra Feldhahn, Secretary-A (9) SECRTYAG73R
Roger Domke, Env. Quality ALT-A (12) EQALTA63R
John Arevalo, Env. Quality ALT-A (12) EQALTA63R
James Pawloski, Env. Engineer Lic-A (12) EVILICAA13R
Scott Rasmusson, Env. Quality ALT-E (P11) EQALTEA49R
Lori Silagy, Env. Quality ALT-E (P11) EQALTEA49R

From GSD

Janis Funkey, Secretary-A (9) SECRTYAG63R
Andrea Sullivan, Geologist-A (12) GEOLGSTAA27R
Mark Cromell, Geologist-A (12) GEOLGSTAA27R
Tyronne Black, Geologist-A (12) GEOLGSTAA27R
Janet Smigielski, Geologist-E (11) GEOLSTEA21R
Ann Stephens, Geologist-E (9) GEOLSTEA21R

RETIRE 10/1/02-TO BE FILLED
Jean Shoquist, Geologist-A (12) GEOLGSTAA27R

GEOLOGICAL AND LAND MANAGEMENT
DISTRICT OFFICES

Grand Rapids District Office

Vacant, Env. Mgr-3 (14) ENVRMGR3A85N

From LWMD

Marianne Oresik, Secretary-E (8) SECRTRYE103R

David Price, Env. Quality ALT-A (12) EQALTA64R

James Fortney, Env. Quality ALT-A (12) EQALTA64R

Michelle Hohn, Env. Quality ALT-A (12) EQALTA64R

Charles Dodgers, Env. Quality ALT-A (12) EQALTA64R

Matthew Occipinti, Env. Eng-E (10 LT) EVIRENGEA11R

Terry Longanbach, Eng. Tech-A (11) ENGRCHAA49R

Robert Day, Env. Quality ALT-E (P11 LT) EQALTEA51R

GEOLOGICAL AND LAND MANAGEMENT
DISTRICT OFFICES

Jackson District Office

Vacant, Env. Mgr-3 (14) ENVRMGR3A35N

From LWMD

Kristina Coffey, Secretary-E (7) SECRTRYE105R

James Sallee, Env. Quality ALT-E (P11) EQALTEA55R

Adam Wygant, Env. Quality ALT-E (P11) EQALTEA55R

GEOLOGICAL AND LAND MANAGEMENT
DISTRICT OFFICES

Kalamazoo District Office

Vacant, Env. Mgr-3 (14) ENVRMGR3A94N

From LWMD

Christine Ducharme, Secretary-A (9) SECRTRYAG75R

Ben Zimont, Env. Quality ALT-A (12) EQALTAB09R

Larry Poynter, Env. Quality ALT-E (P11) EQALTEA54R

Nancy Cuncannan, Env. Quality ALT-E (10 LT) EQALTEA54R

Nancy Adams, Eng. Tech-SS (12) ENGTCHSSA18R

From GSD

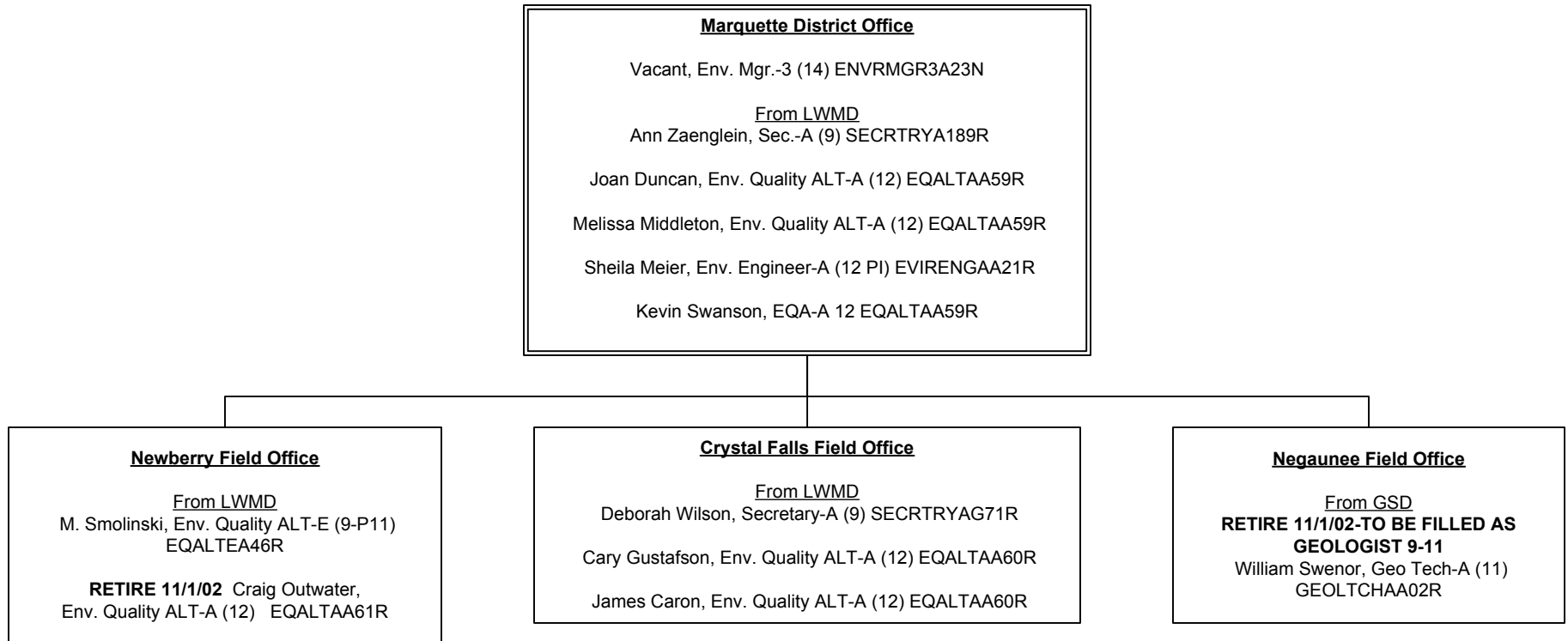
RETIRE 7/1/02 Michael Cote, Env. Mgr-3 (14) ENVRMGR3A26N

Douglas Daniels, Geologist-A (12) GEOLGSTAA32R

Larry Grabowski, Geologist-A (12) GEOLGSTAA32R

Lisa Anderson, Geologist-E (11) GEOLGSTEA12R

GEOLOGICAL AND LAND MANAGEMENT
DISTRICT OFFICES



GEOLOGICAL AND LAND MANAGEMENT
DISTRICT OFFICES

Saginaw Bay District Office

Vacant, Environmental Manager 14

From LWMD

Lynn Obermiller, Secretary-A (9) SECRTRYAH78R

Douglas Morse, Env. Auality ALT-A (12) EQALTAB05R

Joseph Haas, Env. Quality ALT-E (P11) EQALTEA50R

Joy Brooks, Env. Engineer-E (P11) EVIRENGEA27R

Robyn Schmidt, Env. Quality ALT-E (P11) EQALTEA50R

Sara Bonnette, Env. Quality ALT-E (P11) EQALTEA50R

Brian Rudolph, Env. Quality ALT-E (10 LT) EQALTEA50R

From GSD

Lori Gaul, Secretary-E (7) (LT/PI) SECRTRYE94R

Vicki Barnard, Geologist-A (12) GEOLGSTAA28R

Wayne Todd, Geologist-A (12) GEOLGSTAA28R

Larry Organek, Geologist-E (9) GEOLGSTE10R

Andrew Kent, Geo. Tech-A (11) GEOLTCHAA05R

Vacant, Geologist 12

GEOLOGICAL AND LAND MANAGEMENT
DISTRICT OFFICES

Shiawassee District Office

Vacant, Env. Mgr-3 (14) ENVRMGR3A84N

From GSD

David Bechler, Geologist-A (12) GEOLGSTAA29R

RETIRE 8/1/02 Ruben Rosalin, Geologist-E (11) GEOLGSTE11R

From LWMD

RETIRE 11/1/02 Barry Horney, Env. Mgr-3 (14) ENVRMGR3A72N

Peggy Tuzinsky, Secretary-A (9) SECRTYAG74R

David Pingel, Env. Quality ALT-A (12) EQALTA66R

Thomas Kolhoff, Env. Quality ALT-A (12) EQALTA66R

John Skubinna, Env. Quality ALT-E (P11) EQALTEA53R

Donna Cervelli, Env. Engineer-E (10) EVIRENGEA43R

GEOLOGICAL AND LAND MANAGEMENT
DISTRICT OFFICES

Southeast Michigan District Office

Vacant, Env. Manager-3 (14) ENVRMGR3A31N

From LWMD

Mary Maven, Secretary-E (8) SECRTRYE104R

Andrew Hartz, Env. Quality ALT-A (12) EQALTA65R

Maria Zingas, Env. Engineer-A (12) EVIRENGAA22R

David Dortman, Env. Quality ALT-E (P11) EQALTEA52R

Todd Losee, Env. Quality ALT-E (P11) EQALTEA52R

Brian Bury, Env. Quality ALT-E (10 LT) EQALTEA52R

Vacant, Env. Eng-E (9-P11 LT) EVIRENGEA12R

Vacant, Env. Quality ALT-E (9-P11) EQALTEA52R

Bethany Perris, Eng. Tech-E (10) ENGRTCHEA40R

From GSD

Bruce Waldo, Geologist-A (12) GEOLGSTAA30R

Gloria Moreno, Geo. Tech-A (11) GEOLTCHAA06R

RETIRE 7/1/02-TO BE FILLED

Cheryl Pengelly, Secretary-E (8 PI) SECRTRYEH95R