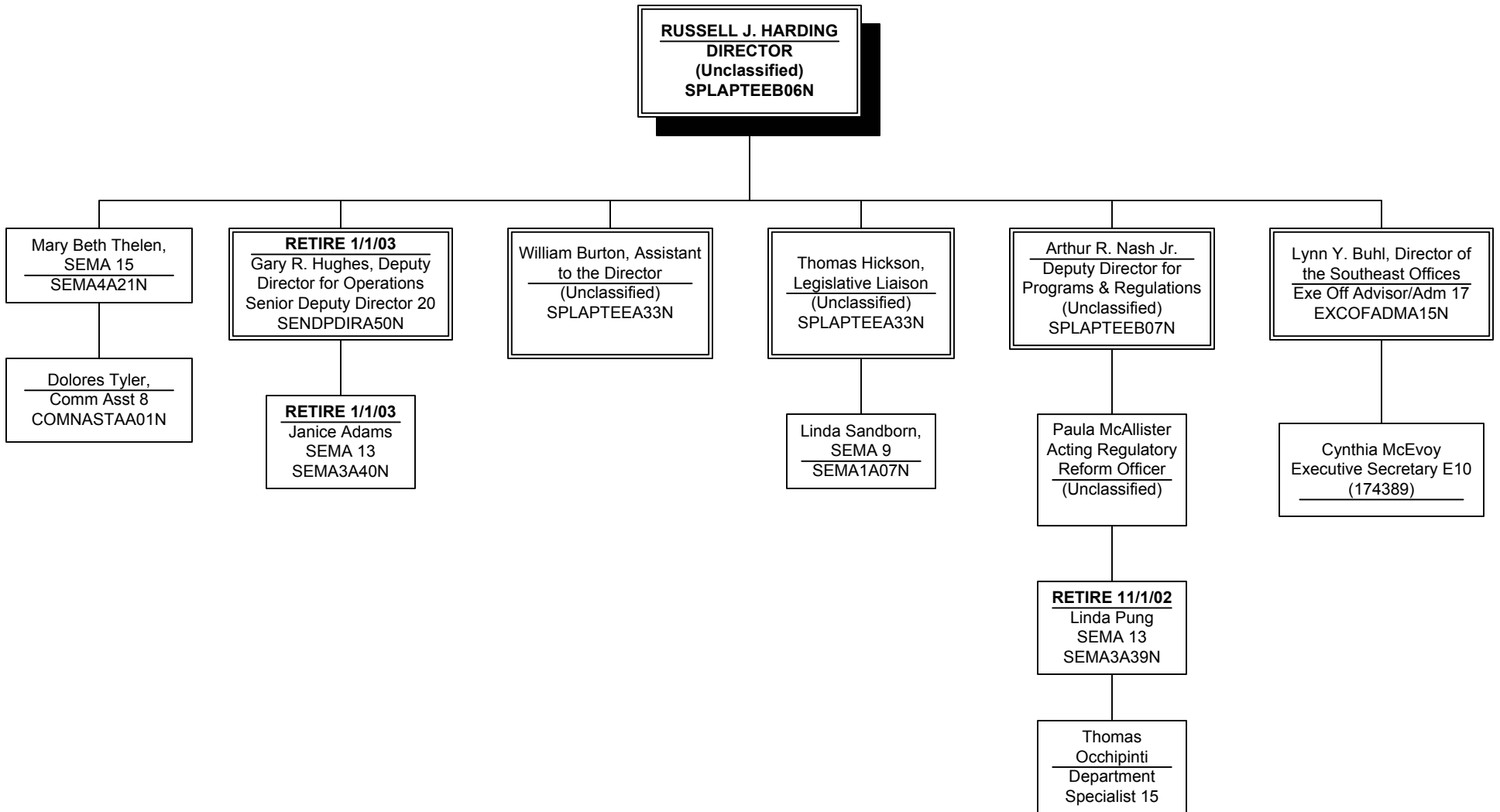
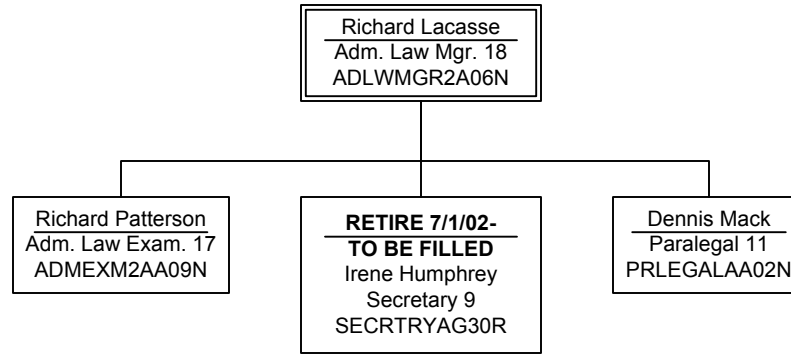


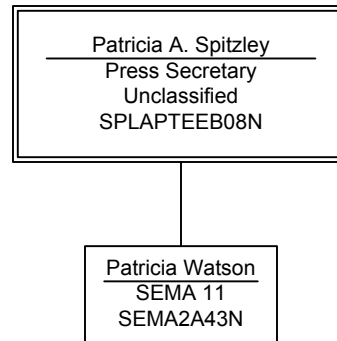
EXECUTIVE DIVISION



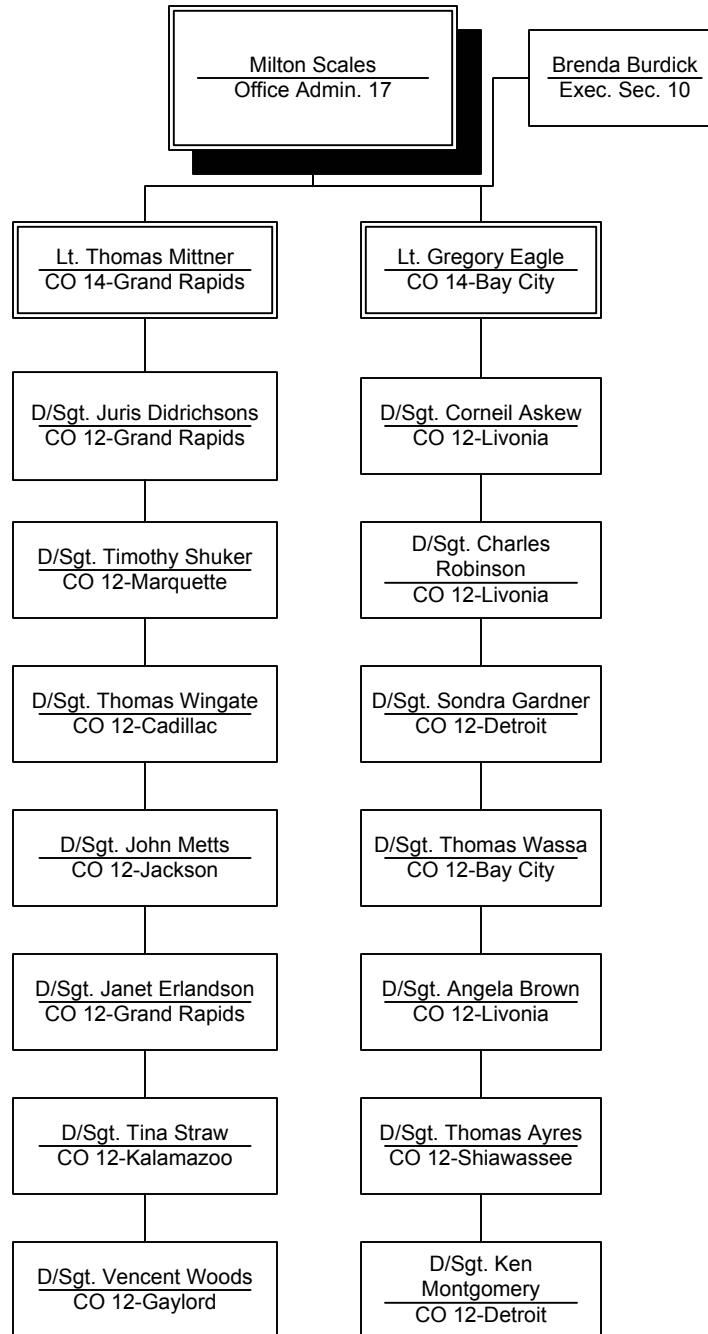
OFFICE OF ADMINISTRATIVE HEARINGS



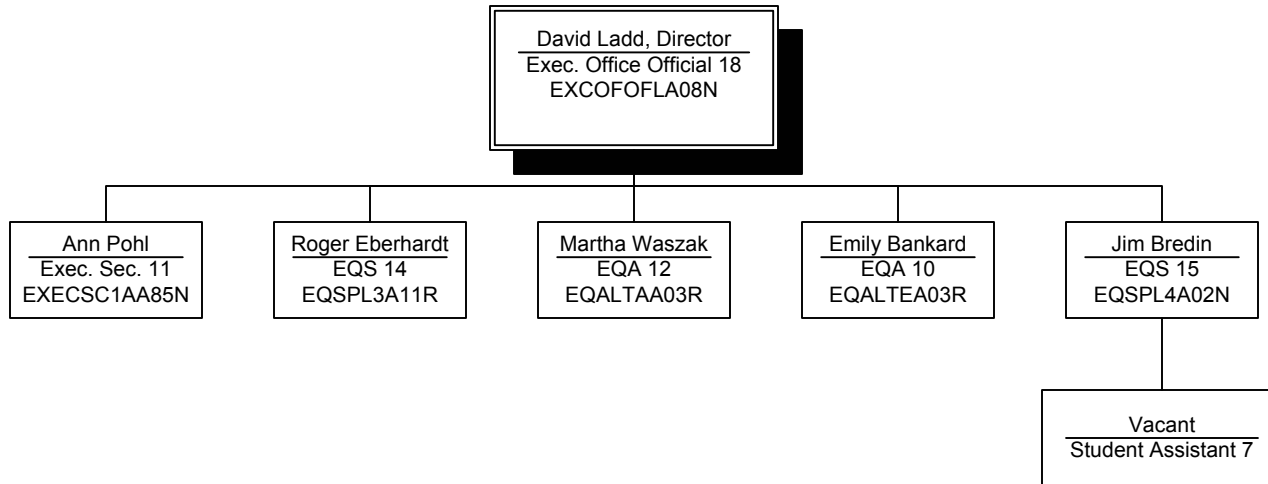
OFFICE OF COMMUNICATIONS



OFFICE OF CRIMINAL INVESTIGATIONS



OFFICE OF THE GREAT LAKES

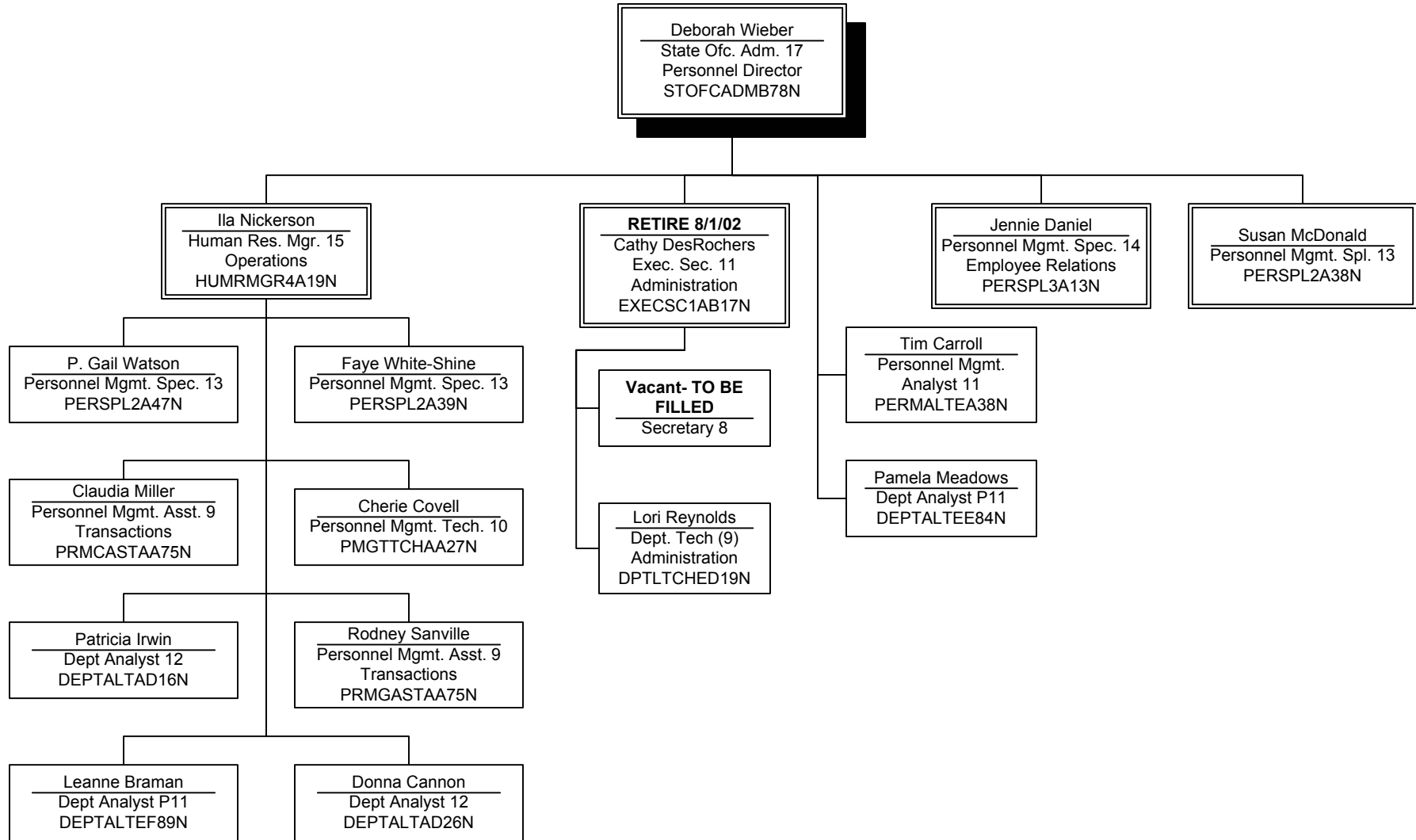


OFFICE OF INTERNAL AUDIT

Beth Timmerman
State Assistant
Administrator 15
STASTADMA55N

Joshua Larsen
Auditor 11
AUDITOREA99N

OFFICE OF PERSONNEL SERVICES



MICHIGAN ENVIRONMENTAL
SCIENCE BOARD

